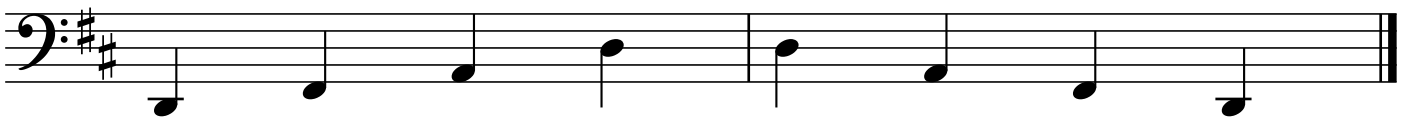


1 Octave Scales and Arpeggios

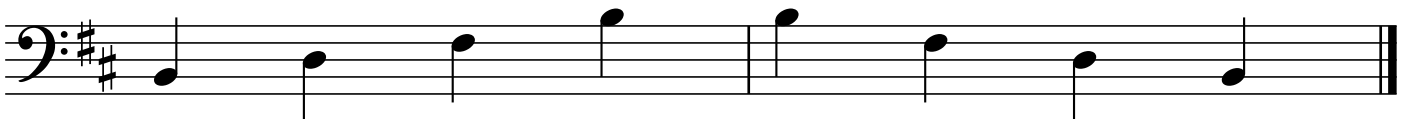
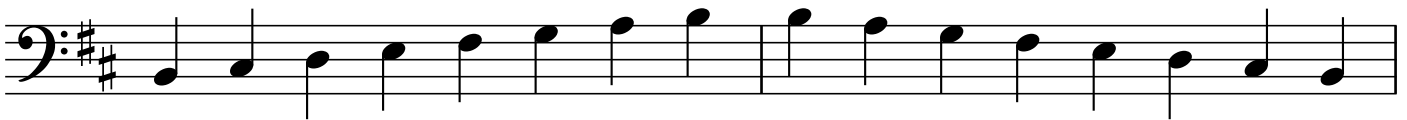
First Octave

Sam Araya

D Major



B Minor



G Major



E Minor

First line of musical notation for E Minor in bass clef with a sharp sign (F#). The notes are: E2, F#2, G2, A2, B2, C3, D3, E3, F#3, G3, A3, B3, C4, D4, E4.

Second line of musical notation for E Minor in bass clef with a sharp sign (F#). The notes are: F#3, G3, A3, B3, C4, D4, E4, F#4, G4, A4, B4, C5, D5, E5.

C Major

First line of musical notation for C Major in bass clef. The notes are: C2, D2, E2, F2, G2, A2, B2, C3, D3, E3, F3, G3, A3, B3, C4.

Second line of musical notation for C Major in bass clef. The notes are: C4, D4, E4, F4, G4, A4, B4, C5, D5, E5, F5, G5, A5, B5, C6.

A Minor

First line of musical notation for A Minor in bass clef. The notes are: A2, B2, C3, D3, E3, F3, G3, A3, B3, C4, D4, E4, F4, G4, A4.

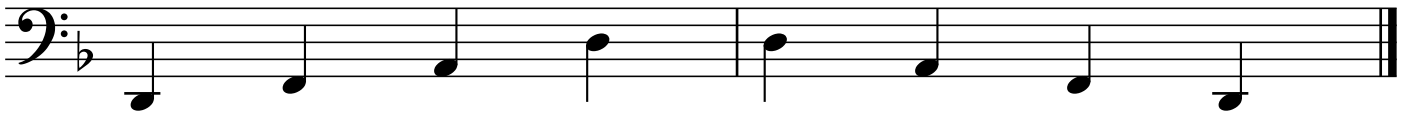
Second line of musical notation for A Minor in bass clef. The notes are: A4, B4, C5, D5, E5, F5, G5, A5, B5, C6, D6, E6, F6, G6, A6.

F Major

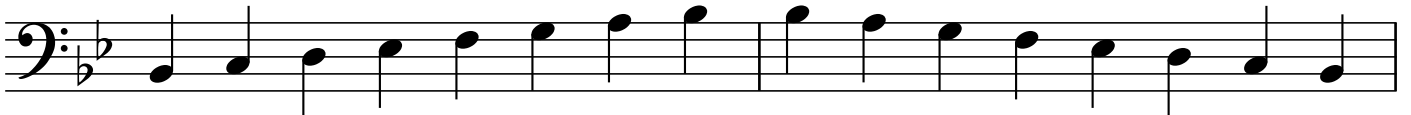
First line of musical notation for F Major in bass clef with a flat sign (Bb). The notes are: F2, G2, A2, Bb2, C3, D3, E3, F3, G3, A3, Bb3, C4, D4, E4, F4.

Second line of musical notation for F Major in bass clef with a flat sign (Bb). The notes are: F4, G4, A4, Bb4, C5, D5, E5, F5, G5, A5, Bb5, C6, D6, E6, F6.

D Minor



Bb Major



G Minor

